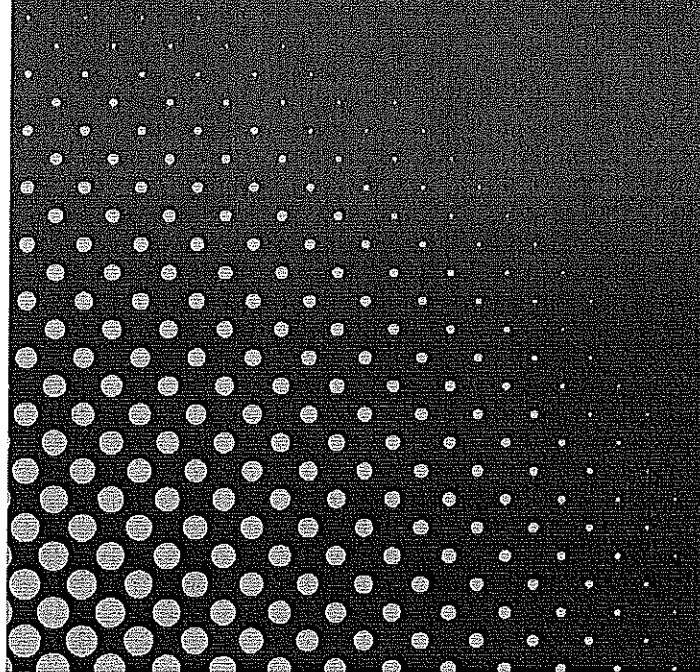


D E A F

# Deaf Emergency Awareness Form

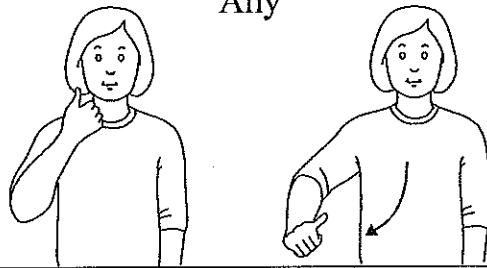


DEAFECC.COM

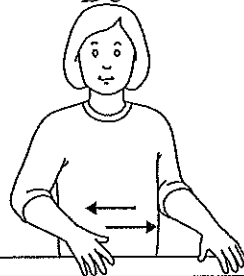
## **DEAF OR HARD OF HEARING COMMUNICATION GUIDELINES**

- To get the attention of a deaf or hard of hearing person you can tap on the shoulder or wave your hand in front of them.
- It is important to make eye contact with the deaf or hard of hearing person you are trying to communicate with.
- Using the alphabet you can fingerspell names and any other words that are not listed.
- Use facial expressions when communicating.
- Always make sure your mouth can be seen while communicating.
- Try different approaches with the cards if the sentence is not understood at first like drawing a picture or writing it down.
- Please have patience with the person you are communicating with.
- When spelling with letters keep wrist steady, arm in close to chest, and only move fingers.
- **THIS IS NOT INTENDED TO REPLACE A SIGN LANGUAGE INTERPRETER.**

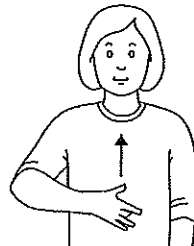
Any



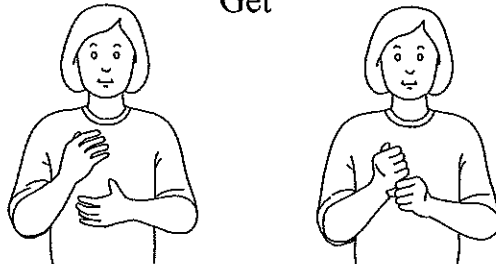
Do



Feel



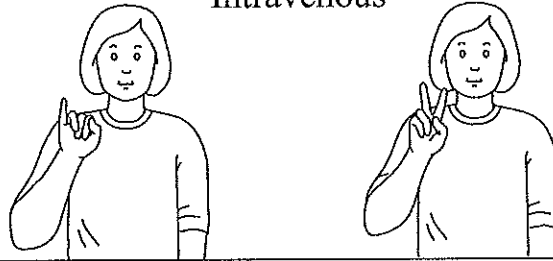
Get



Give



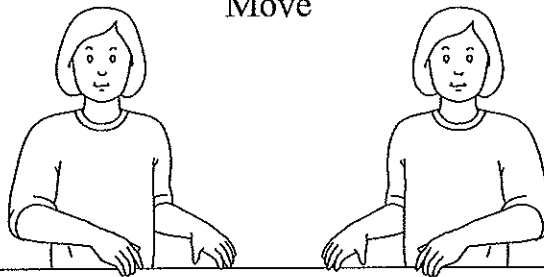
Intravenous



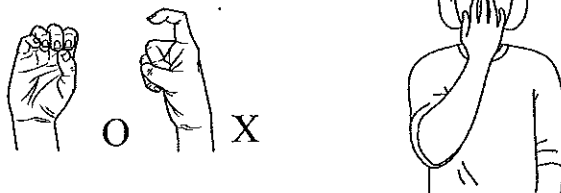
Medicine



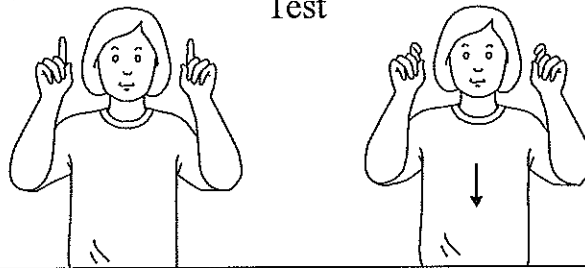
Move



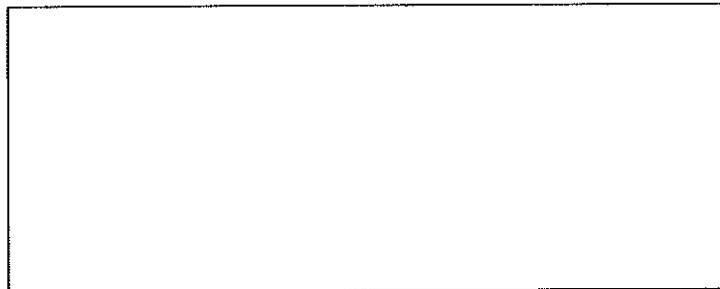
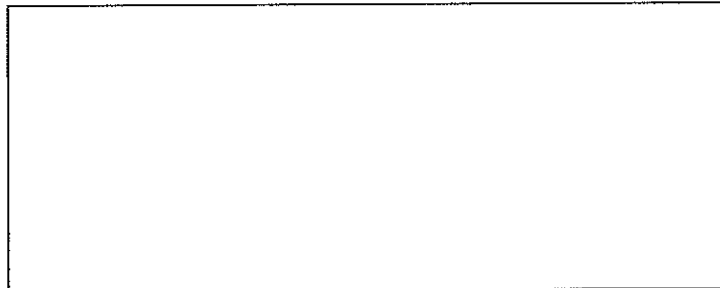
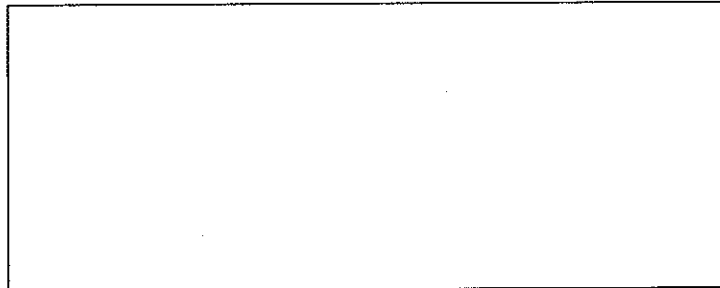
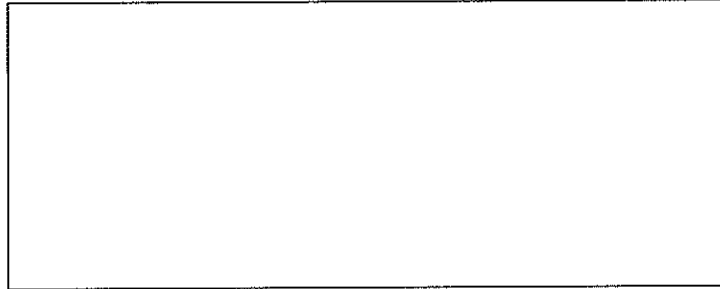
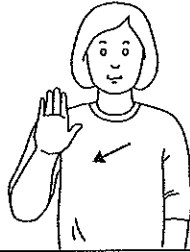
Oxygen



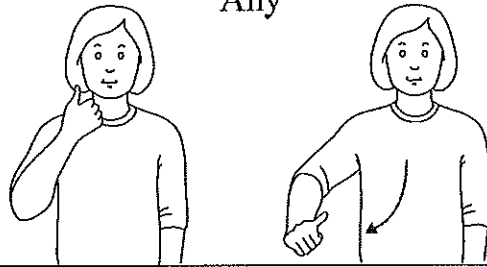
Test



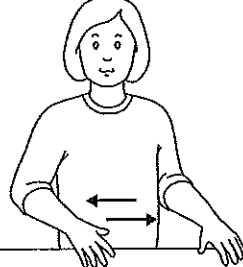
Your



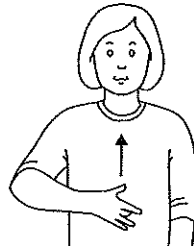
Any



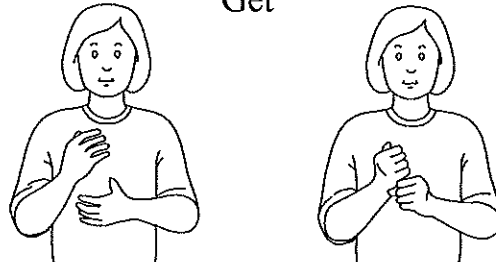
Do



Feel



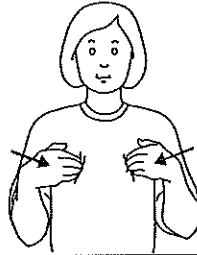
Get



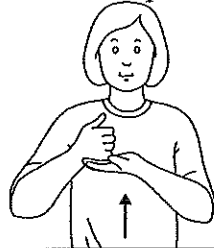
Give



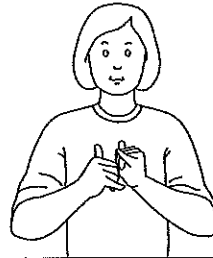
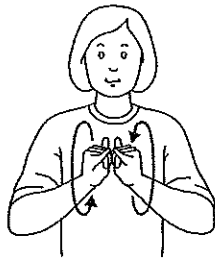
Have



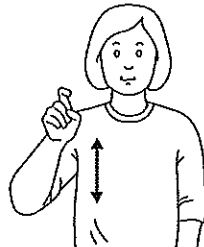
Help



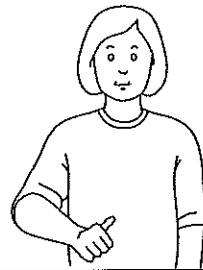
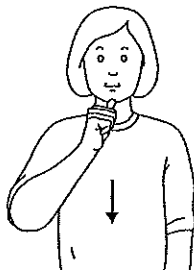
How



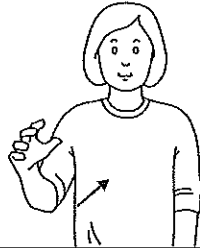
Need



Not



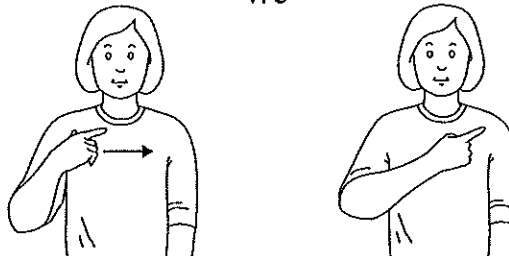
Take



To

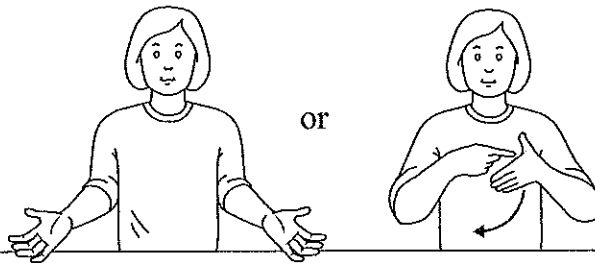


We

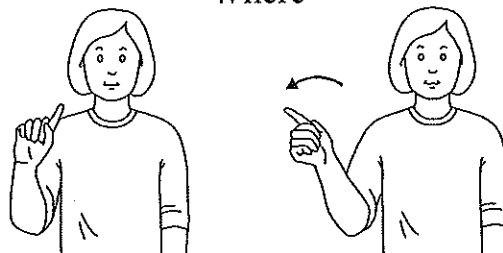


What

or



Where

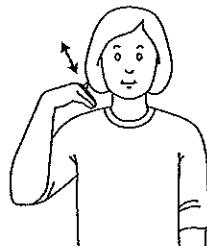




Abdomen/Stomach



Back



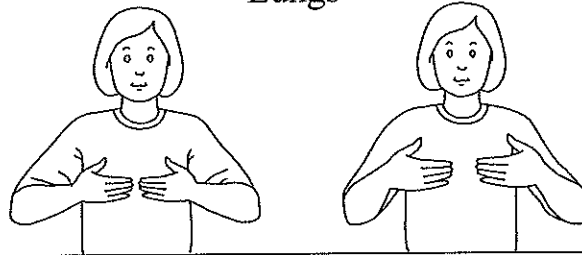
Chest



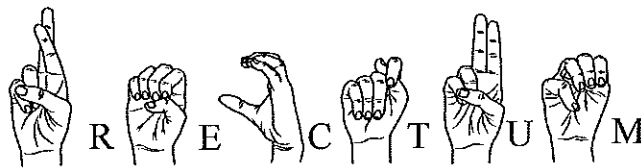
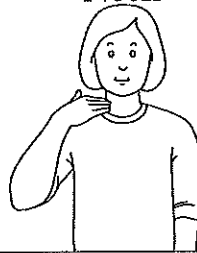
Heart

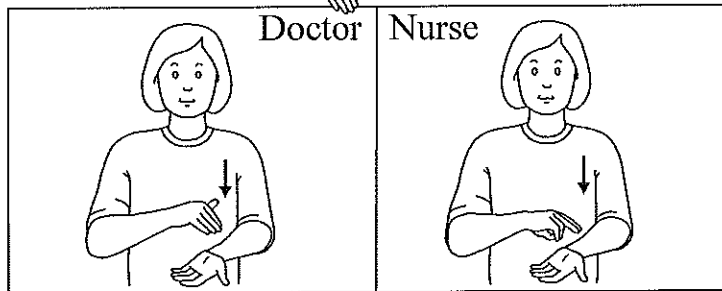
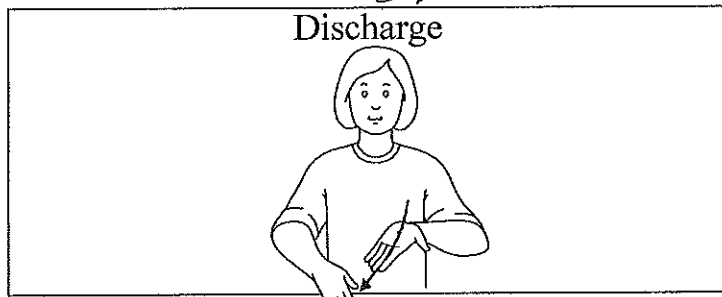
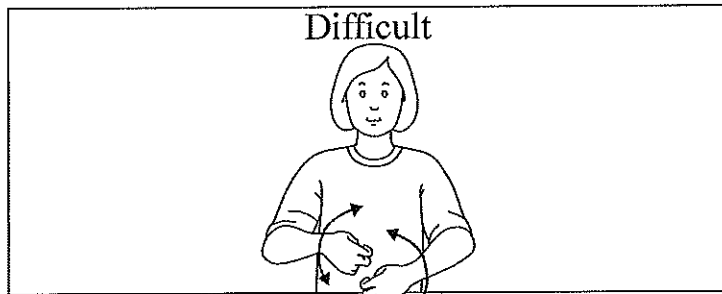
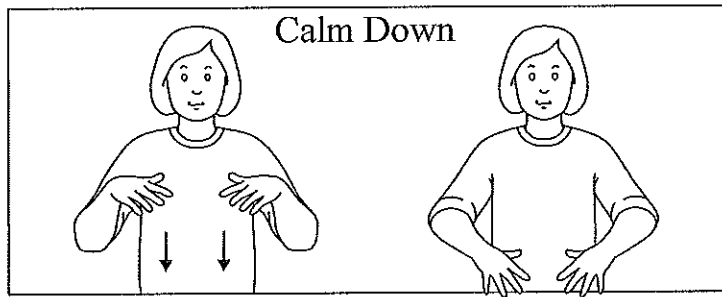
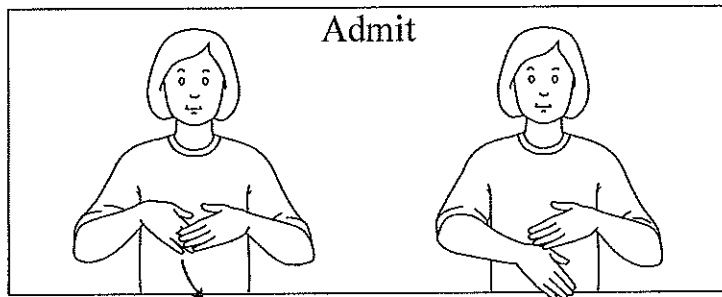


Lungs



Neck

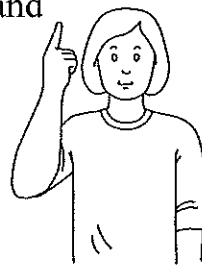
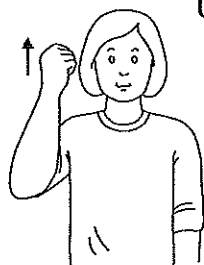




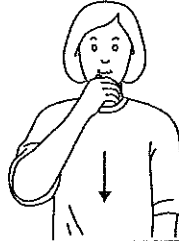
Hospital



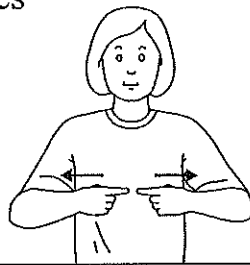
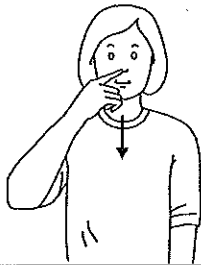
Understand



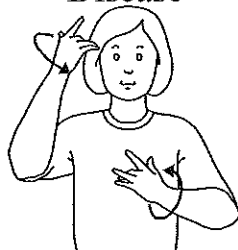
Age



Allergies



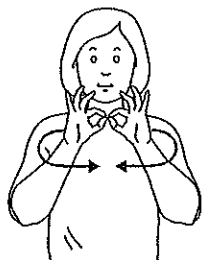
Disease



Street Drugs



Family

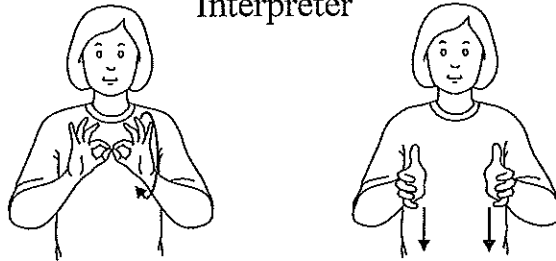


Patient Info

Insurance



Interpreter



Medical



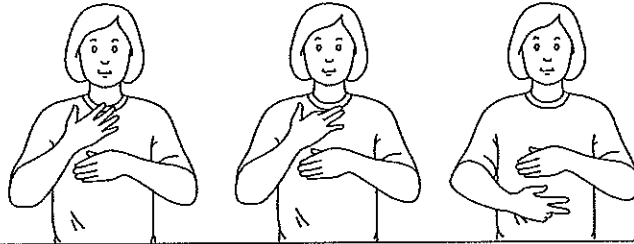
Medicine



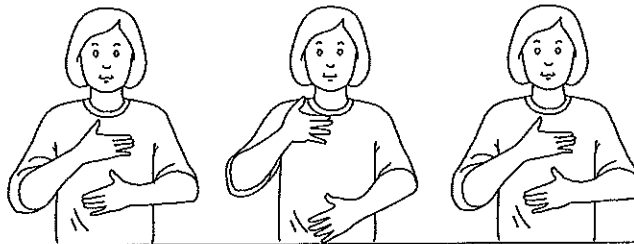
Name



Bleeding



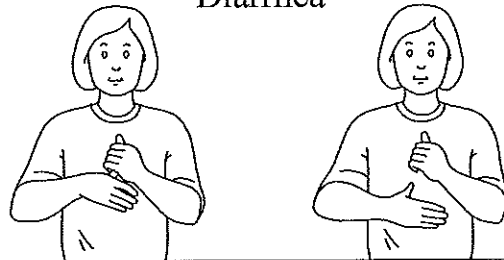
Breathing



Cough



Diarrhea



Dizzy



## Signature



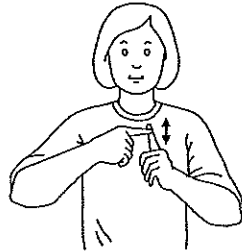
## Surgery



- Point to area of surgery



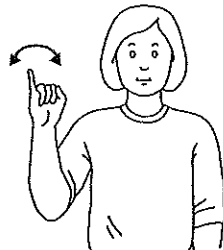
Fever



Headache



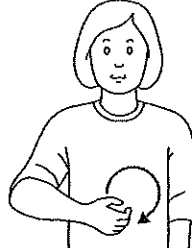
Infection



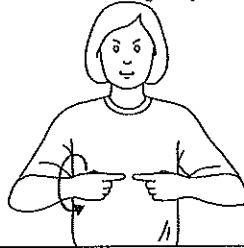
Menstruation



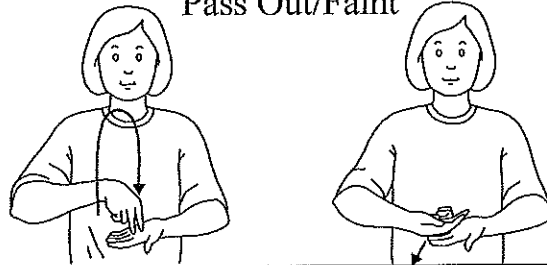
Nausea



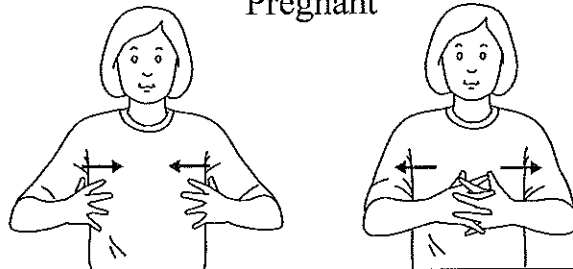
Pain/Injury



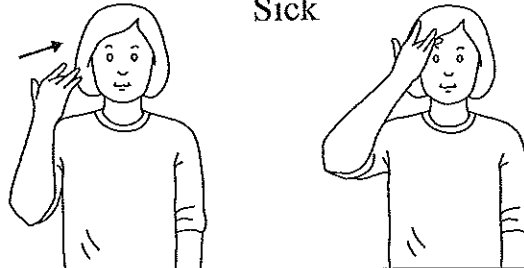
Pass Out/Faint



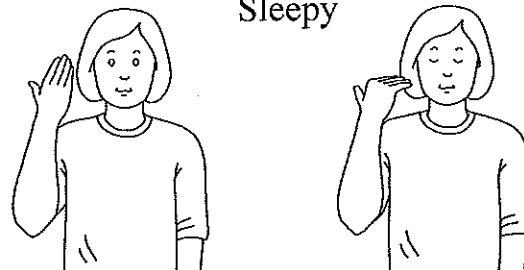
Pregnant



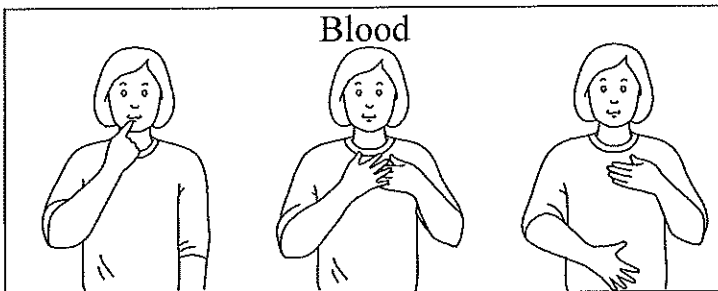
Sick



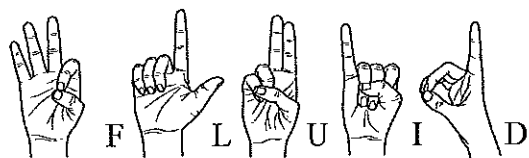
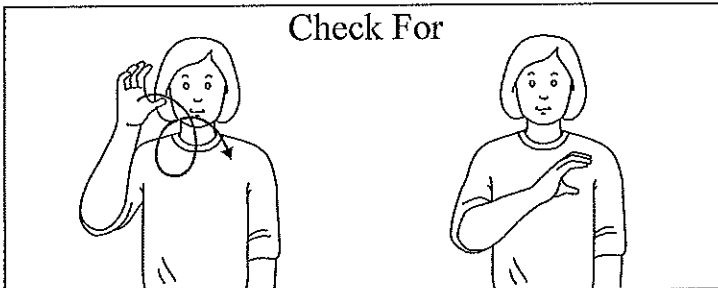
Sleepy



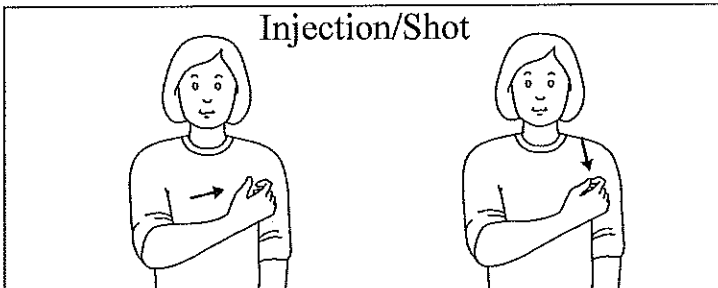
Blood



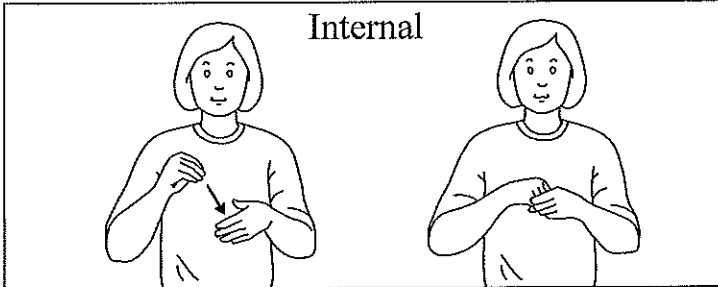
Check For



Injection/Shot

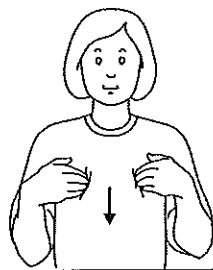


Internal

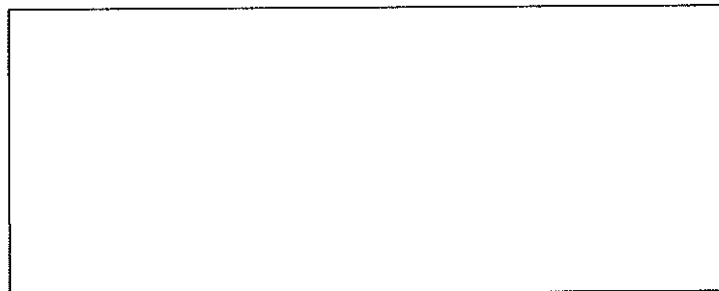
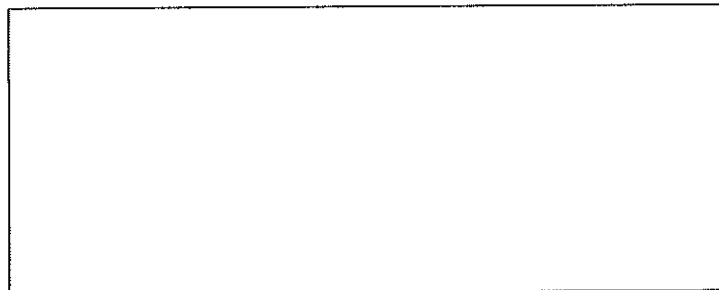
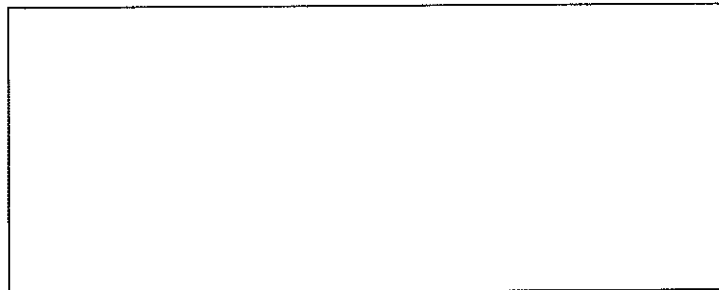
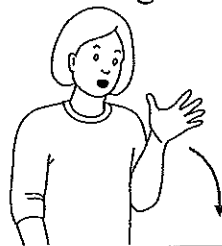


Treatment

Tired



Vomiting





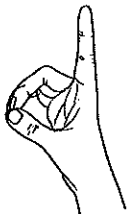
A



B



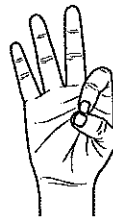
C



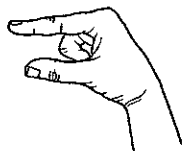
D



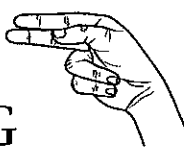
E



F



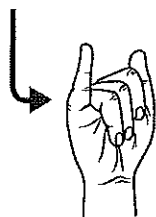
G



H



I



J



K



L



M



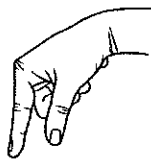
N



O



P

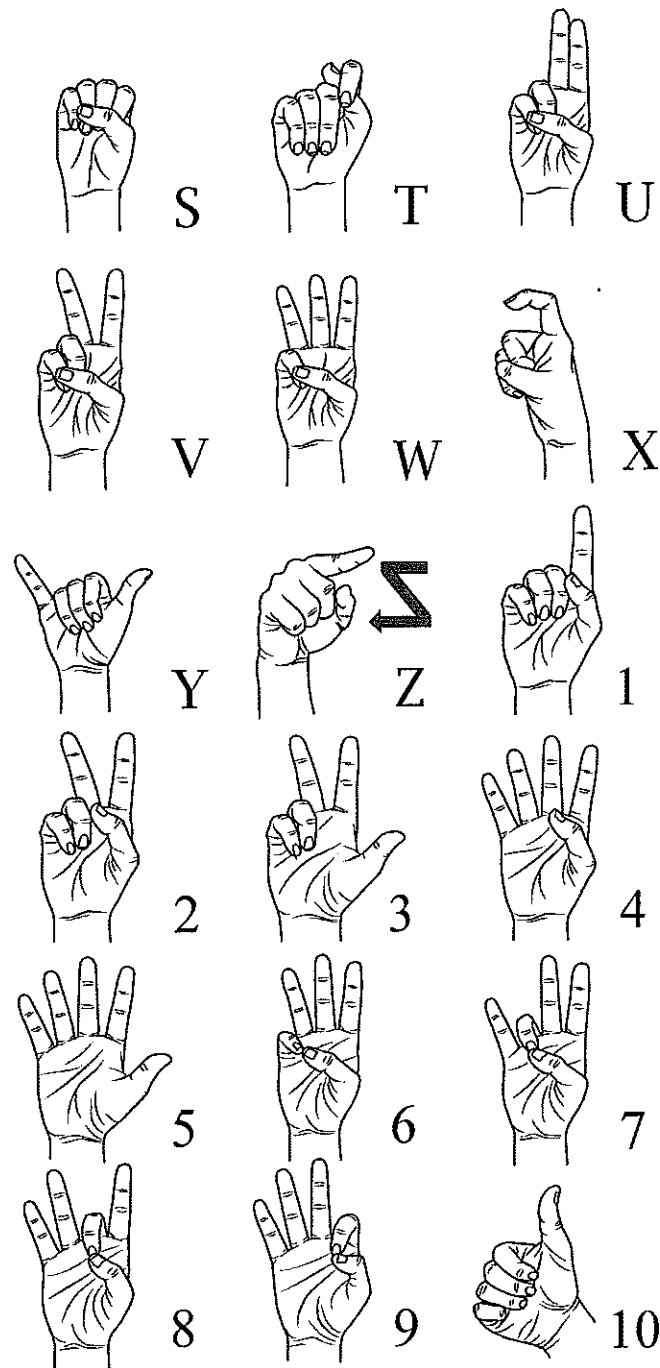


Q

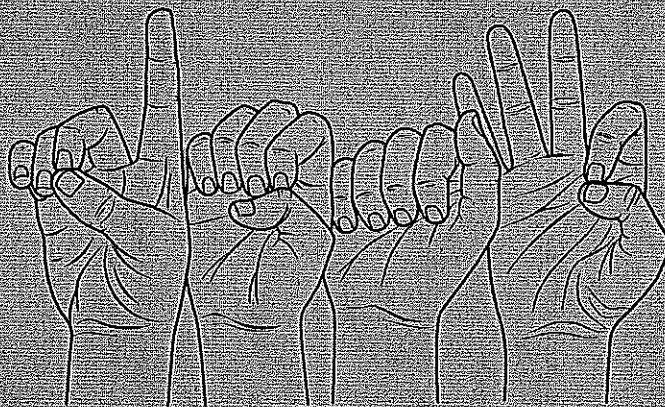


R

DIRECTIONS: WHEN SPELLING WITH LETTERS,  
KEEP ARM IN CLOSE TO CHEST.  
MAKE SURE MOUTH CAN BE SEEN.



ESTABLISH EYE CONTACT.  
 KEEP WRIST STEADY.  
 ONLY FINGERS SHOULD BE MOVING.



DEAFECC, LLC  
DEAF, Copyright © 2007